



# RV GENERATORS - QUIETPACT

## QP-55/65/75LP, QP-75G

### Air-Cooled Gasoline & LP RV Generator Sets

#### APPLICATIONS:

- Class A, & C Motorhomes with single or dual roof A/C
- Travel Trailers
- Sport Utility Trailers
- Fifth Wheels
- Horse Trailers
- Industrial Vehicles

Model 04703 - 5.5 kW 60Hz, LP  
Model 04705 - 6.5 kW 60Hz, LP  
Model 04707 - 7.5 kW 60Hz, LP  
Model 05750 - 7.5 kW 60Hz, Gas



### FEATURES

- **INNOVATIVE DESIGN & PROTOTYPE TESTING** are key components of GENERAC'S success in "IMPROVING POWER BY DESIGN." But it doesn't stop there. Total commitment to component testing, reliability testing, environmental testing, destruction and life testing, plus testing to applicable CSA, RVIA, and other standards, allows you to choose GENERAC POWER SYSTEMS with the confidence that these systems will provide superior performance.
- **SINGLE SIDE SERVICEABILITY:** No hassle service. All maintenance items are easily accessible at the front of the generator for quick replacement.
- **MOST POWERFUL ENGINE:** These generators feature a 760cc, 27 horse Generac OHVI V-twin engine. The largest engine in air-cooled RV power generation allows for constant output under extreme conditions.
- **SOLID-STATE, FREQUENCY COMPENSATED VOLTAGE REGULATION.** This state-of-the-art power maximizing regulation system is standard on all Generac models. It provides optimized FAST RESPONSE to changing load conditions and MAXIMUM MOTOR STARTING CAPABILITY by electronically torque-matching the surge loads to the engine.
- **SINGLE SOURCE SERVICE RESPONSE** from Generac's dealer network provides parts and service know-how for the entire unit, from the engine to the smallest electronic component.

**GENERAC**<sup>®</sup>

# FEATURES

## Generac RV Generator - QP-55/65/75LP, QP-75G

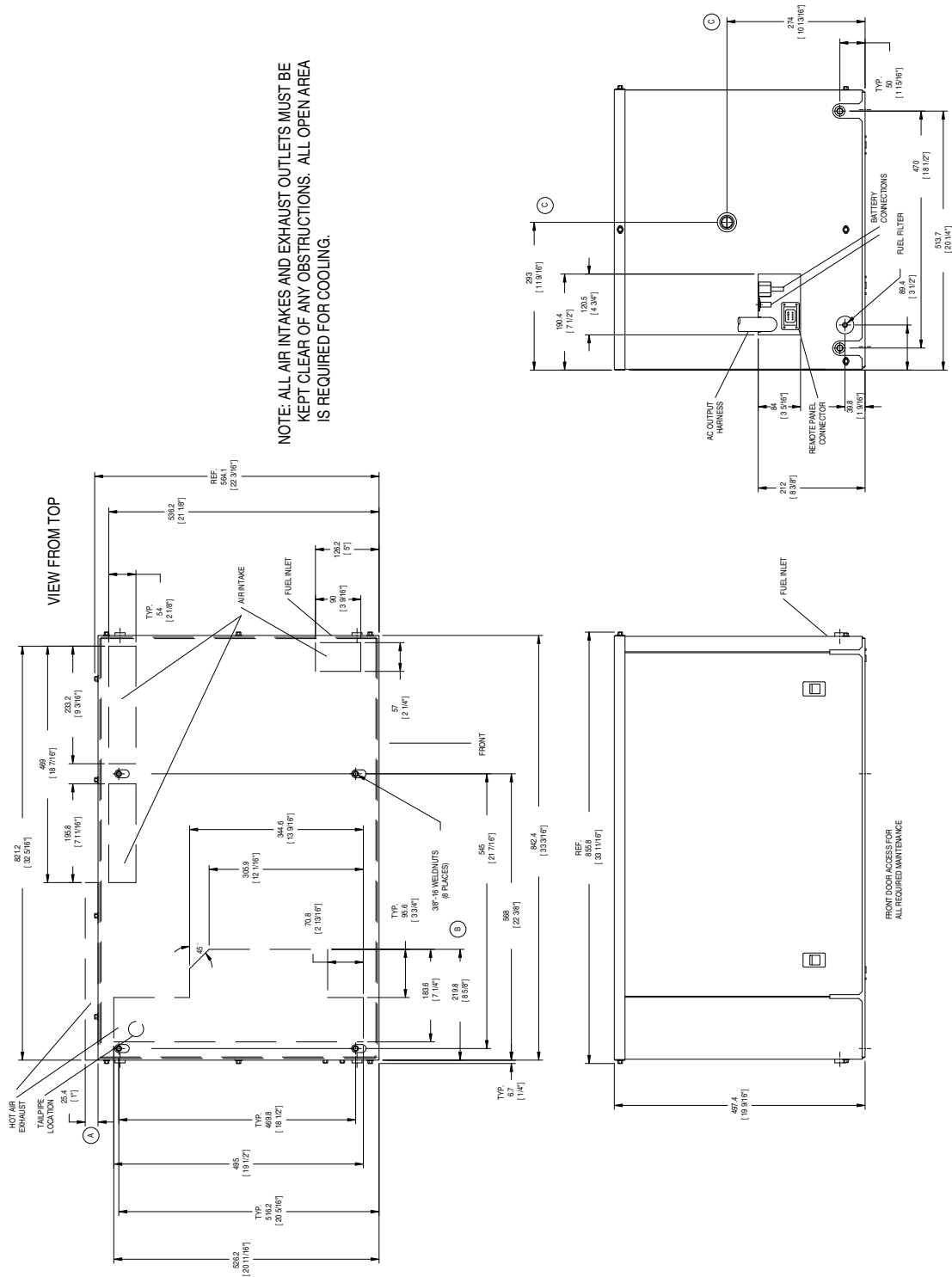
ENGINE	•Generac (OHVI) Design	Maximizes engine “breathing” for increased fuel efficiency. Plateau honed cylinder walls and plasma moly rings help engine run cooler, reducing oil consumption. Because heat is the primary cause of engine wear, the OHVI has a significantly longer life than competitive engines.
	•”Spiny-lok” cast iron cylinder walls	Rigid construction and added durability provide long engine life.
	•Solid-state ignition	Provides reliable starting every time.
	•Automatic, electronic choke	Automatically assures quick and reliable starting everytime.
	•Full pressure lubrication system	Superior lubrication to all vital bearings means better performance, less maintenance and significantly longer engine life.
	•Low oil pressure shutdown system	Superior shutdown protection prevents catastrophic engine damage due to low oil.
	•High temperature shutdown	Prevents damage due to overheating. Restarts automatically once cooled for unattended operation.
	•Certifications	RVIA, CARB, EPA, U.S. Forest Service
•Evaporative port available	CARB compliant in trailer applications.	
GENERATOR	•Displaced phase excitation	Maximizes motor starting capability.
	•Automatic voltage regulation	Regulates the output voltage to ±2% prevents damaging voltage spikes.
	•Belt driven	Lowers the engine speed to reduce fuel consumption and noise levels, and to increase engine life.
	•RVIA Listed	For your safety
CONTROLS	•Remote Start/Stop option	Allows for one touch start from any selected location inside the vehicle. Also displays on board diagnostics.
	•Main Line Circuit Breaker	Protects generator from overload.
	•Mechanical governor	Reacts quickly to changing loads.
	•Battery charger	2 Amp "trickle charger" maintains battery when generator is in use.
UNIT	•Durable, Rhino-coated enclosure	Provides the ultimate protection against mother nature.
	•Enclosed critical grade muffler	Quiet, critical grade muffler is mounted inside the unit to prevent injuries while stationary or in transit.
	•Spark arrested exhaust	Includes a spark arrestor approved by the U.S. Forest Services.
	•Enhanced serviceability	Simple one side serviceability for performing maintenance.

# SPECIFICATIONS

**GENERAC®**

GENERATOR	Model 4703	Model 4705	Model 4707	Model 5750
Rated Maximum Continuous Power Capacity	5500 Watts	6500 Watts	7500 Watts	7500 Watts
Rated Voltage	120	120	120	
Rated Maximum Continuous Load Current 120 Volts	45.8 Amps	54.2 Amps	62.5 Amps	62.5 Amps
240 Volt Configurable	Yes (22.9 Amps)	Yes (27.1 Amps)	Yes (31.25 Amps)	Yes (31.25 Amps)
Main Line Circuit Breakers	30 & 20 Amp	30 & 30 Amp	35 & 35 Amp	35 & 35 Amp
Phase	1	1	1	1
Number of Rotor Poles	2	2	2	2
Rated AC Frequency	60Hz	60Hz	60Hz	60Hz
Power Factor	1	1	1	1
Engine RPM	2200	2571	2571	2571
Rotor RPM	3600	3600	3600	3600
Unit Weight (Pounds/Kilos)	329/149.2	331/150.1	333/151	330/149.7
Dimensions (L x W x H)				
inches	33.7 x 22.2 x 19.6	33.7 x 22.2 x 19.6	33.7 x 22.2 x 19.6	33.7 x 22.2 x 19.6
mm	856 x 564 x 498	856 x 564 x 498	856 x 564 x 498	856 x 564 x 498
ENGINE	Model 4703	Model 4705	Model 4707	Model 5750
Type of Engine	GENERAC OHVI V-TWIN	GENERAC OHVI V-TWIN	GENERAC OHVI V-TWIN	GENERAC OHVI V-TWIN
Number of Cylinders	2	2	2	2
Displacement	760cc	760cc	760cc	760cc
Cylinder Block	Aluminum w/Cast Iron Sleeves	Aluminum w/Cast Iron Sleeves	Aluminum w/Cast Iron Sleeves	Aluminum w/Cast Iron Sleeves
Valve Arrangement	Overhead Valve	Overhead Valve	Overhead Valve	Overhead Valve
Ignition System	Solid-state w/Magneto	Solid-state w/Magneto	Solid-state w/Magneto	Solid-state w/Magneto
Governor System	Mechanical Fixed Speed	Mechanical Fixed Speed	Mechanical Fixed Speed	Mechanical Fixed Speed
Compression Ratio	9.5:1	9.5:1	9.5:1	9.5:1
Starter	12 Vdc	12 Vdc	12 Vdc	12 Vdc
Oil Capacity Including Filter (Quarts/Liters)	Approx. 1.9 Qts./1.8L	Approx. 1.9 Qts./1.8L	Approx. 1.9 Qts./1.8L	Approx. 1.9 Qts./1.8L
Fuel Consumption				
Gallons/Liters per hour	LPG	LPG	LPG	Gasoline
10% Load	0.55/2.08	0.55/2.08	0.55/2.08	0.51/1.93
50% Load	0.93/3.52	0.99/3.75	1.05/3.97	0.80/3.03
100% Load	1.20/4.54	1.53/5.79	2.06/7.8	1.28/4.85

# Generac RV Generator - QP-55/65/75LP, QP-75G



## Service After the Sale

Generac's certified service organization, the largest in the industry, provides unsurpassed installation, reliable ongoing maintenance, and large inventories of parts, components, and accessories.

For RV product support please call 888-GENERAC or visit our dealer locator at [www.guardiangenerators.com](http://www.guardiangenerators.com).

Owner's manuals (including installation, operation, maintenance and support information) are shipped with every Generac RV generator. Additional copies can be downloaded from [www.generac.com](http://www.generac.com).



Generac Power Systems, Inc. • S45 W29290 HWY. 59, Waukesha, WI 53189 • [generac.com](http://generac.com)

©2009 Generac Power Systems, Inc. All rights reserved. All specifications are subject to change without notice. Bulletin 01818405BY/Printed in U.S.A. 03.09